



New premier community proudly built by CCB



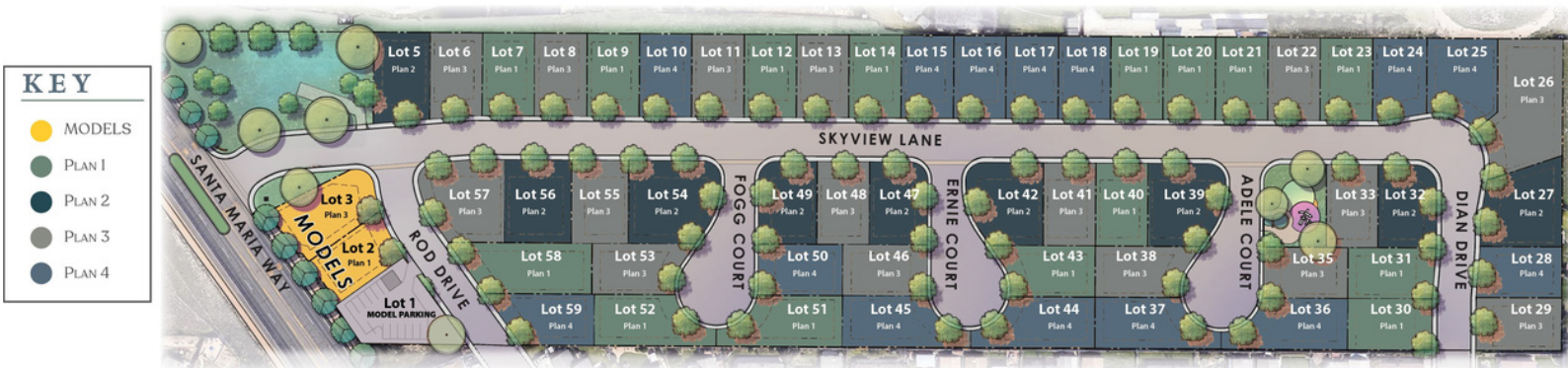
The perfect home for every family



We are excited to introduce our newest premier community of 57 new homes located in the highly desirable South Santa Maria/Orcutt area with views overlooking the Santa Maria Skyline.

Our homes are designed with every family in mind with open floorplans, 3-5 bedrooms, and space for entertaining. They showcase our 30 years of experience while exuding our pride and craftsmanship in each home that we build. Skyview Estates is conveniently located near Waller Park, in the highly coveted Orcutt Union School district, and has easy access to both Highway 101 and Highway 135 (Orcutt Expressway,) which is a direct 20 minute commute to Vandenberg AFB.

## SITE MAP





Cottage



Prairie

# The Blythestone Plan 1

## THE BLYTHESTONE

### PLAN 1

✦ 1,646 Square Feet

🏠 Single Level

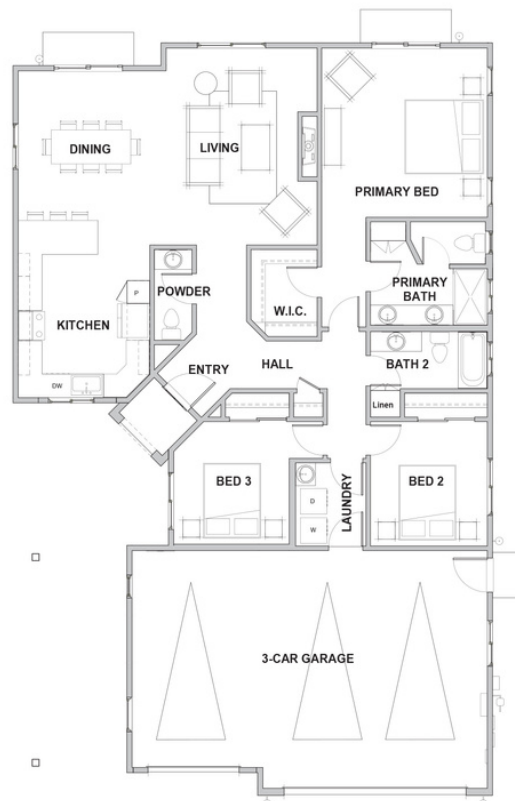
🛏 3 Bedrooms

🛁 2½ Bathrooms

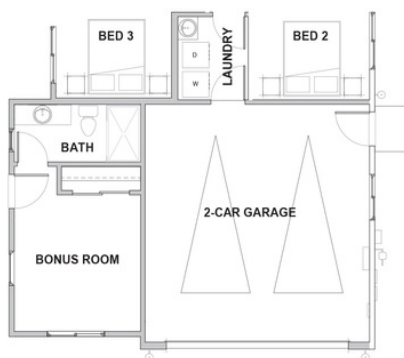
🚗 3-Car Garage

✦ 1,875 Square Feet

🏠 Optional Bonus Room with 2-Car Garage



Ground Floor



Optional Bonus Room

In an effort to meet consumer expectations, Coastal Community Builders reserves the right to make changes or modifications to maps, plans specifications, materials, features, and colors without notice. All renderings are artist conceptions and are not intended to be literal depictions of the buildings, fences, walks, driveways or landscaping. Special wall and window treatments, upgraded floor coverings, softscape, hardscape, landscape, and other items featured in and around the model homes are decorator suggested and not included in the purchase price. Residents are automatically included in the Homeowners' Association and are subject to Special Assessments and Community Facility Fees. Ask your Sales Representative for details. Plans to build out this project as proposed are subject to change without notice. Coastal Community Builders, Inc DRE #01266964



Cottage











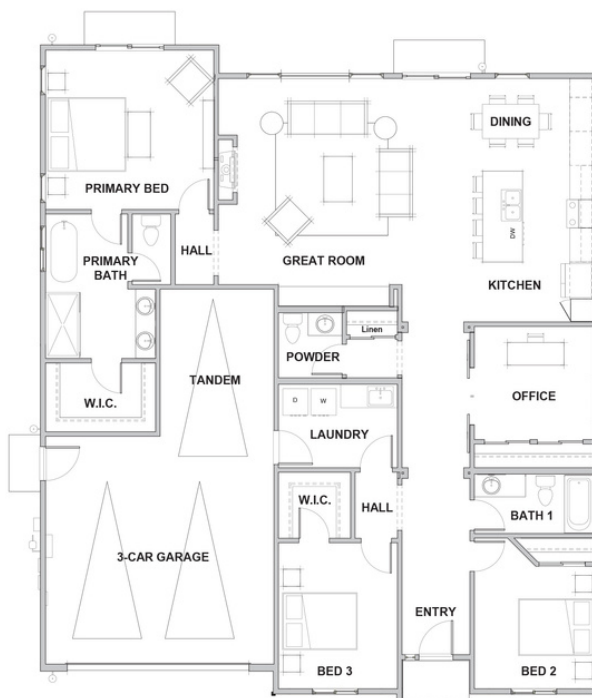
Prairie

# The Hampshire Plan 2

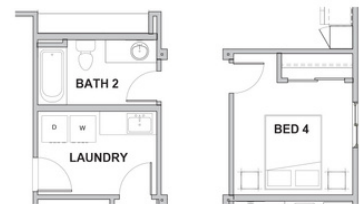
## THE HAMPSHIRE

### PLAN 2

-  2,086 Square Feet
-  Single Level
-  3 Bedrooms
-  2½ Bathrooms
-  Office
-  3-Car Tandem Garage
-  Optional Bedroom 4 & Bath 3  
in lieu of Formal Living and  
Powder Rooms
-  Optional Formal Living Room  
in lieu of Office



Ground Floor



Optional Bedroom 4 and Bath 3



Optional  
Formal Living Room

In an effort to meet consumer expectations, Coastal Community Builders reserves the right to make changes or modifications to maps, plans specifications, materials, features, and colors without notice. All renderings are artist conceptions and are not intended to be literal depictions of the buildings, fences, walks, driveways or landscaping. Special wall and window treatments, upgraded floor coverings, softscape, hardscape, landscape, and other items featured in and around the model homes are decorator suggested and not included in the purchase price. Residents are automatically included in the Homeowners' Association and are subject to Special Assessments and Community Facility Fees. Ask your Sales Representative for details. Plans to build out this project as proposed are subject to change without notice. Coastal Community Builders, Inc DRE #01266964



Cottage











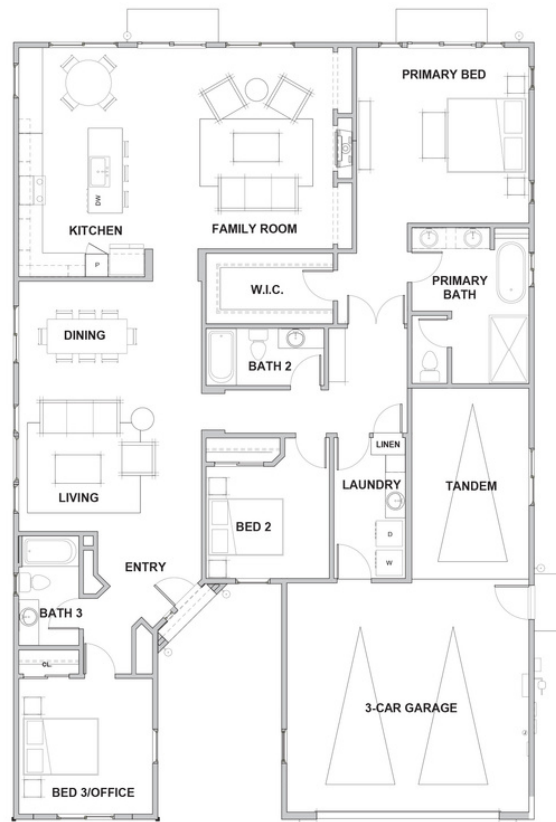
Prairie

# The Pembroke Plan 3

## THE PEMBROKE

### PLAN 3

-  2,223 - 2,409 Square Feet
-  Single Level
-  3 Bedrooms
-  3 Bathrooms
-  Family Room
-  Living/Dining Room
-  3-Car Tandem Garage
-  Optional Bedroom 4 in lieu of Tandem Garage



Ground Floor



Optional Bedroom 4

In an effort to meet consumer expectations, Coastal Community Builders reserves the right to make changes or modifications to maps, plans specifications, materials, features, and colors without notice. All renderings are artist conceptions and are not intended to be literal depictions of the buildings, fences, walks, driveways or landscaping. Special wall and window treatments, upgraded floor coverings, softscape, hardscape, landscape, and other items featured in and around the model homes are decorator suggested and not included in the purchase price. Residents are automatically included in the Homeowners' Association and are subject to Special Assessments and Community Facility Fees. Ask your Sales Representative for details. Plans to build out this project as proposed are subject to change without notice. Coastal Community Builders, Inc DRE #01266964



Cottage



Prairie

# The Wellington Plan 4

## THE WELLINGTON

### PLAN 4

2,412 - 2,662 Square Feet

Two Story

- 3 Bedrooms
- 2½ Bathrooms
- Loft
- 2 Garages for 3 Cars
- Optional En-Suite in lieu of 1-Car Garage
- Optional Office in lieu of 1-Car Garage
- Optional Bedroom 4 in lieu of Loft



In an effort to meet consumer expectations, Coastal Community Builders reserves the right to make changes or modifications to maps, plans specifications, materials, features, and colors without notice. All renderings are artist conceptions and are not intended to be literal depictions of the buildings, fences, walks, driveways or landscaping. Special wall and window treatments, upgraded floor coverings, softscape, hardscape, landscape, and other items featured in and around the model homes are decorator suggested and not included in the purchase price. Residents are automatically included in the Homeowners' Association and are subject to Special Assessments and Community Facility Fees. Ask your Sales Representative for details. Plans to build out this project as proposed are subject to change without notice. Coastal Community Builders, Inc DRE #01266964

# Appointed Features



## EXTERIOR FEATURES

- Distinctively crafted in Cottage and Prairie architectural styles
- Front yard landscaped with drought tolerant plants and drip irrigation system with timers
- 3-car garage per plan
- Pre-plumbed for soft water system (loop only)
- Covered porch, per plan
- Concrete tile roof

## ENERGY-SAVING ELEMENTS

- Dual-pane, Low-E vinyl windows
- Water-saving, low-flow commodes
- Energy Star Appliances
- Digital programmable thermostat
- Tankless water heater with recirculating pump
- LED recessed lighting
- Solar ready panels installed with an option to purchase or lease
- 95% efficient FAU system

## KITCHEN DESIGN

- Attractive & abundant culinary space
- Low maintainance quartz countertop
- Large peninsula or island for food prep per plan
- LG Stainless Steel appliances
- Pre-plumbed for water at refrigerator bay
- Built in Pantry per plan

## INTERIOR DETAILING

- 10 ft. ceilings
- 8 ft. Doors
- Solid wood, recessed-panel cabinets
- Solid surface quartz counter tops
- Indoor laundry room with built in sinks
- Overhead fire sprinkler system
- Brushed nickel interior hardware and fixtures
- Spacious dining area open to great room

## MASTER SUITE

- Spacious bedroom quarters
- Large tile walk-in shower
- Dual vanity sinks with quartz countertop
- Sliding door to patio or balcony (per plan)
- Roomy walk-in closet

## PERSONALIZE YOUR HOME WITH DESIGNER UPGRADES

- Quartz, stone, and designer tile options
- Elegant cabinet styles and finishes
- Wood, tile, luxury vinyl, and upgraded carpets
- Upgraded appliance package options
- Upgraded electrical options and smart features
- Upgraded plumbing options
- Upgraded room, ensuite & bedroom options



# SKYVIEW ESTATES

